

Steps In Setting Up A Home Workshop

A Reference Guide For The Weekend DIY'er

Durham Woodworking Club

December 14,2015

Steps In Setting Up A Home Workshop

- Key questions in setting up a home workshop
- Essential shop equipment
- Questions answered... Get started
- Preparing the shop space
- Installing equipment in the new shop space
- Projects

Key Questions In Setting Up A Home Workshop

- What's the purpose for the new shop (personal or business)?
- What do I want to make or do in my new shop space?
- What's my preference, power tools versus traditional hand tools?
- What **safety equipment** is required for a home workshop?
- How much space do I have for my new shop?
- Will this be a dedicated shop space, like a basement or will it be shared, like a garage?
- What equipment will go in my new shop?
- Will there be sufficient power to run all equipment safely?

Key Questions In Setting Up A Home Workshop

- Will I have enough space to expand in the future, should I purchase more equipment?
- What is the optimal layout in the space allotted?
- How do I heat/cool my new shop area?
- Will I have proper ventilation with the shop space?
- What are the essential pieces of equipment for my shop?
- Can I visit with other local woodworkers to see their shop set up and talk about their wins & struggles?
- Identify how to store hazardous and flammable materials, such as stains, thinners and cleaners?

Essential shop equipment

Power Tools

- Table Saw
- Compound Mitre Saw
- Circular Saw
- Jointer/Thickness Planner
- Band Saw
- Drill
- Drill Press (Floor/Bench)
- Router Table

Hand Tools

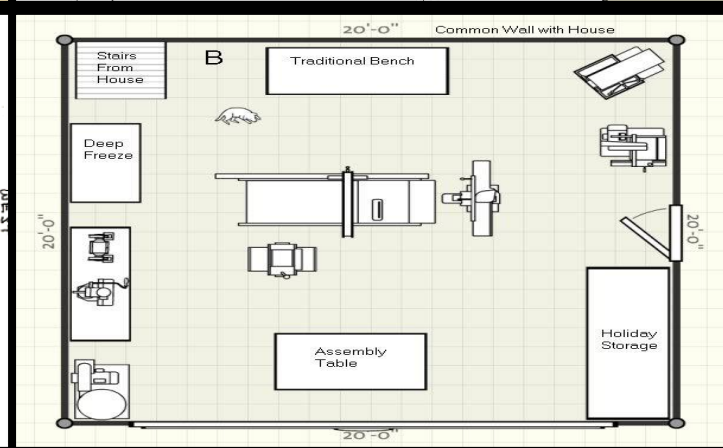
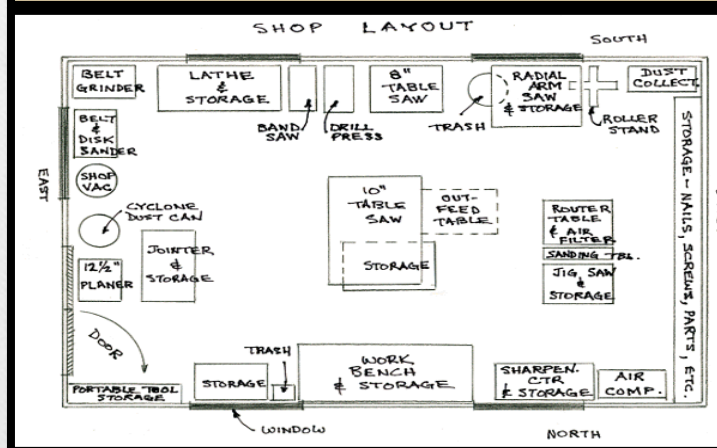
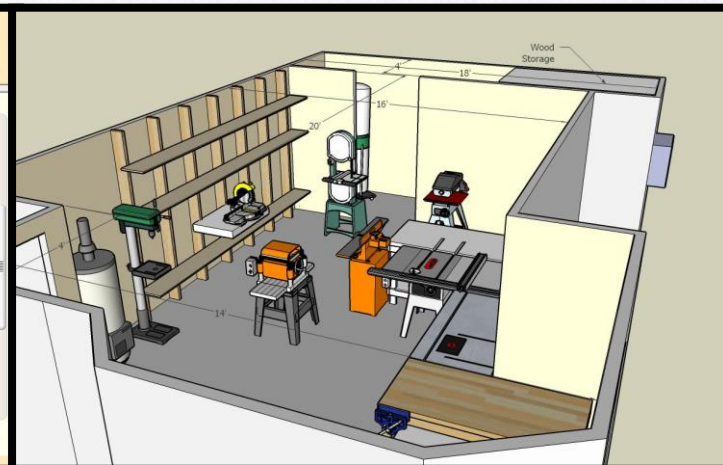
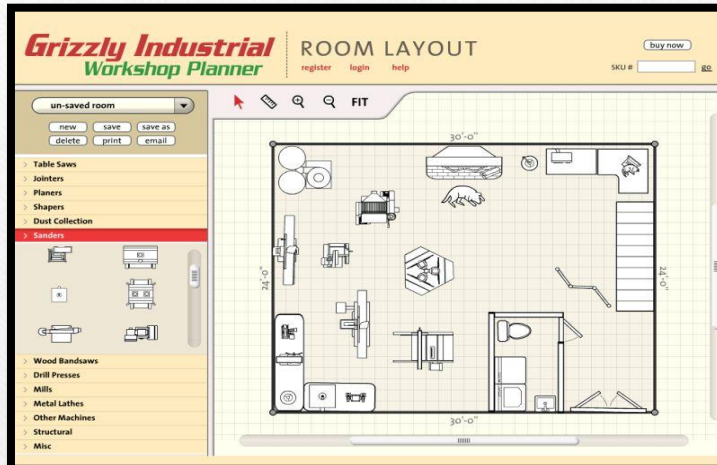
- Workbench
- Planes (block plane & jack plane)
- Saws (cross cut carcass, dovetail saw, rip tenon saw, Japanese dozuki saw)
- Squares (combination square, framing square, engineer's square)
- Marking tools (carpenter pencil, .5mm mechanical pencil, scribing knife)
- Sharpening (set of Waterstones (600 & 2000 grit) and gauge)

Questions Answered...

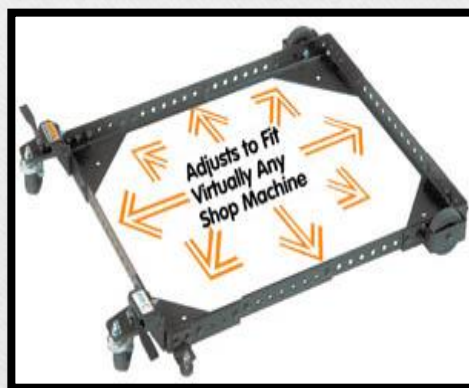
Get Started

- Use internet search engines for examples of existing shop layouts.
- Develop a shop layout, using paper or a software program, move and adjust the layout as needed.
- Build a budget & schedule, prioritize based on immediate needs.
- Determine which tools require mobility versus fixed placement.
- Group effective tools together, such as turning tools at one end of shop versus chop saw and router.
- Layout an existing dust collection system or potential DC system.
- Determine layout for all electrical outlets for all fixed and mobile tools, including 220 volt outlets for specific tools (table saw & dust collection system).
- Ensure sufficient lighting for all work areas.

Examples of shop layout designs



Fixed based versus mobile



Mobile bases with 3" wheels are strongly recommended

Preparing the Shop Space

- Looking from floor to ceiling (garage or basement), paint floor with a protective anti slip paint and paint walls and ceiling with a white base coat for brightness.
- Repair any voids or cracks in floor to ensure tools will move smoothly.
- Review soundproofing options for attached and shared spaces.
- Add any storage cabinets or shelves to hold tools and supplies.
- Build out a dedicated dust collection system or use a mobile DC, or shop vac.
- Install centralized surge protection on sub panel or main power source, in the event storm surge scenario.
- Install safety equipment, as required. A land or cell phone are strongly recommended to be installed within any shop, in the event of any emergency.

Installing Equipment In The Shop Space

- Start loading your shop, start with fixed power tools, lock them in place, then move to secondary equipment.
- Load the remainder of your equipment, try to utilize all available shop space, including walls and ceiling.
- While loading equipment, take photos and markdown any serial and model numbers, store in a safe location in the event of theft, fire or damage.
- Utilize labels to mark and identify storage cabinets, drawers.
- Optional, use rubber anti fatigue mats to reduce stress while standing at equipment for any long length of time.
- Determine which tools are portable.

Examples of home workshops



Projects

- Now that the shop has been set, start a list of projects and work through the list, keeping in mind that lists are meant to be adjusted.

Thank you

Thank you to the members of the Canadian Woodworking Forum & the Durham Woodworking Club for their input, as well as, all images presented were found on the web.