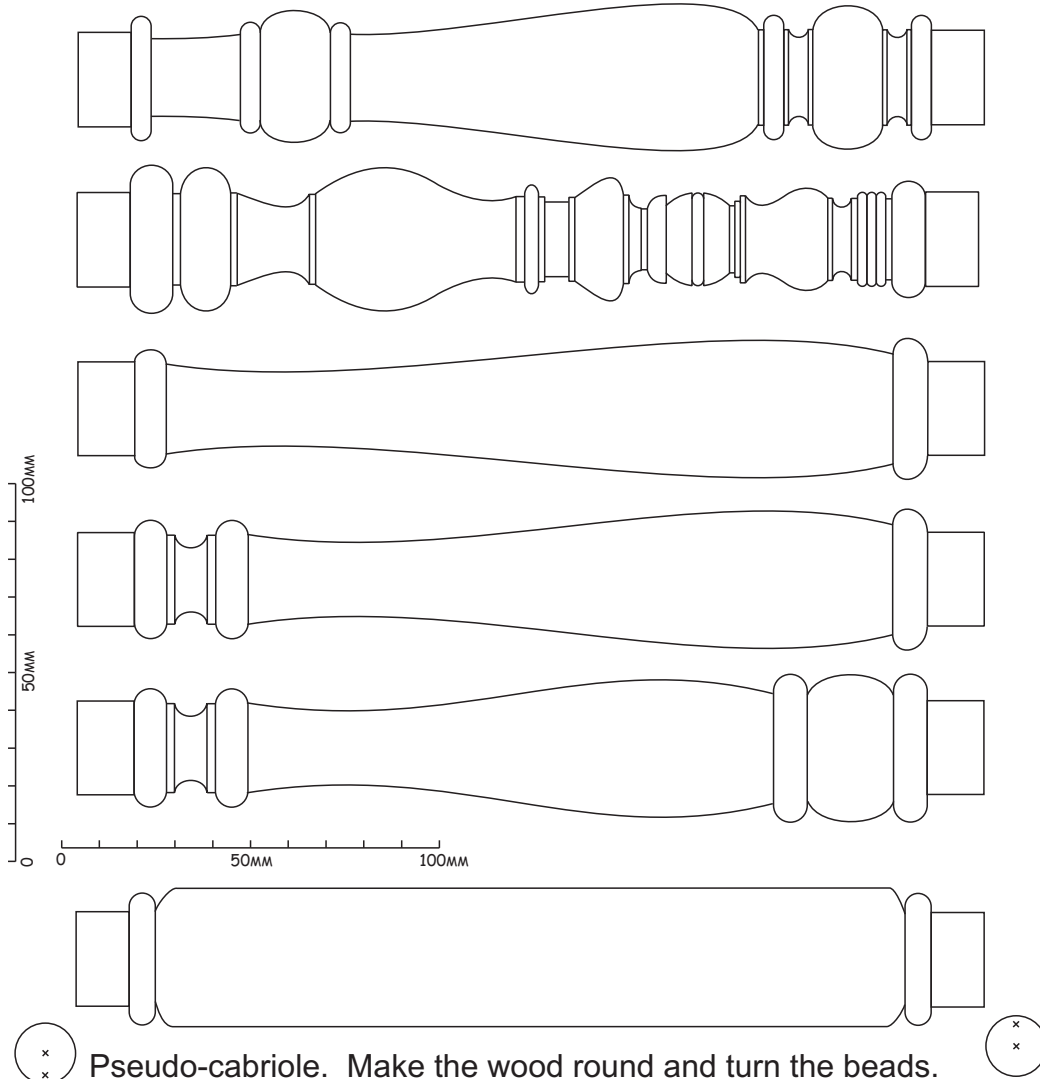


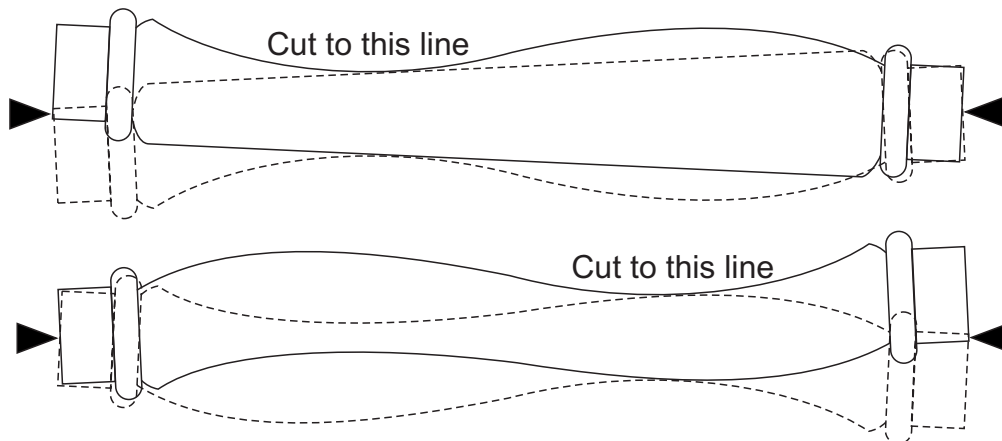


SPINDLES FOR WIG STANDS

Shown here half size. Enlarge to full size and these will make excellent wig stand shafts. Or try one of the Multi-centre Spindle Designs.

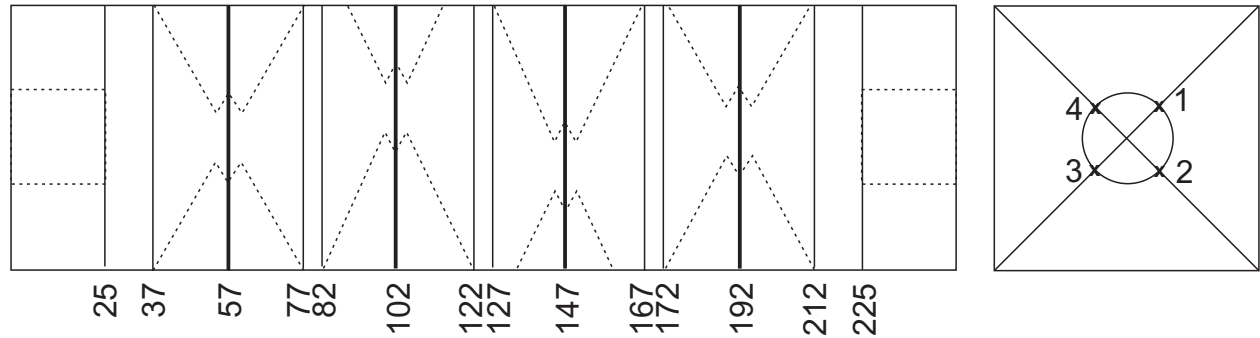


Pseudo-cabriole. Make the wood round and turn the beads. Then turn with each end off-centre while the other end is on-centre as shown below. The off-sets are on opposite sides. For a tapered cabriole cut the wood to a taper before shifting off-centre.

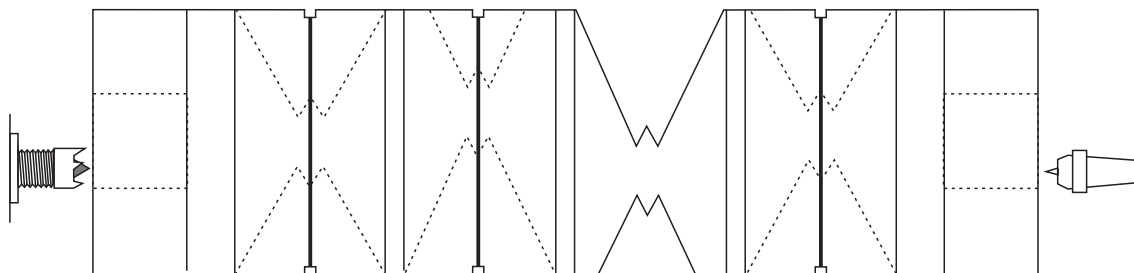


MULTI-CENTRE SPINDLE

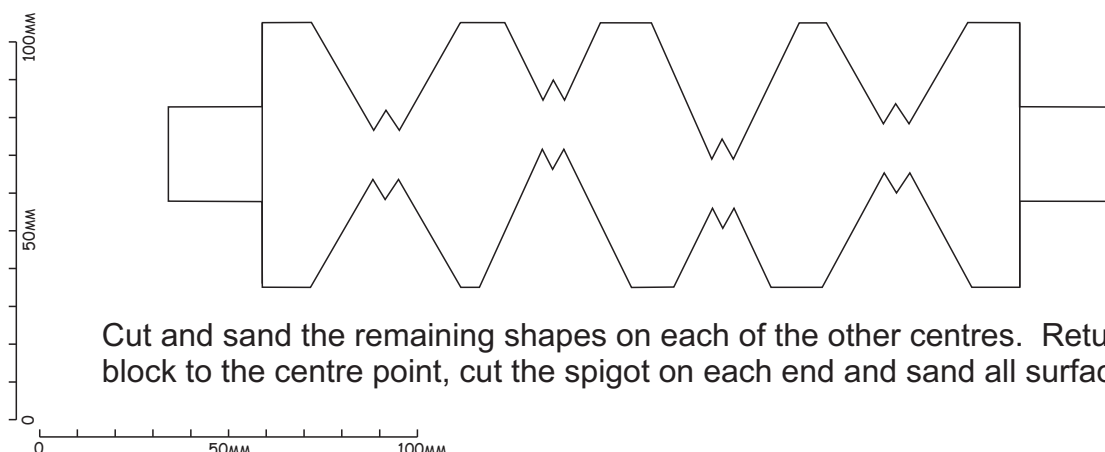
This design is based on the Phillip Greenwood Offset Candlestick project in Woodturning 268. For the four big notches he used, as in this project sheet, equal offsets at each end. You may wish to vary the offsets. The size shown here is for a wig stand stem, or you may turn it as a shorter/taller/fatter/slimmer form.



Start with a block 70 x 70 x 250mm long with the grain running lengthways. Mark the ends as above with four 12mm offsets. The numbers are the same on each end. Mount the wood between centres on the centre marks. Round the block and sand it. Make light and bold pencil marks as shown above. You may use a parting tool to cut a little way (just 2mm) down each bold line to show clearly where the cuts will be.



Remount the wood on one of the offset points. Cut one of the shapes close to the centre first. This may be done by starting with a parting tool down to a diameter of about 25mm and then completing the shape with spindle gouge and skew. Keep the sides of the cut at equal angles. Cut out to the light pencil marks. Sand all the cut area. When you understand the outcomes of the off-centre turning better you may cut beyond these lines on some cuts to produce a totally different look to the work.



Cut and sand the remaining shapes on each of the other centres. Return the block to the centre point, cut the spigot on each end and sand all surfaces.

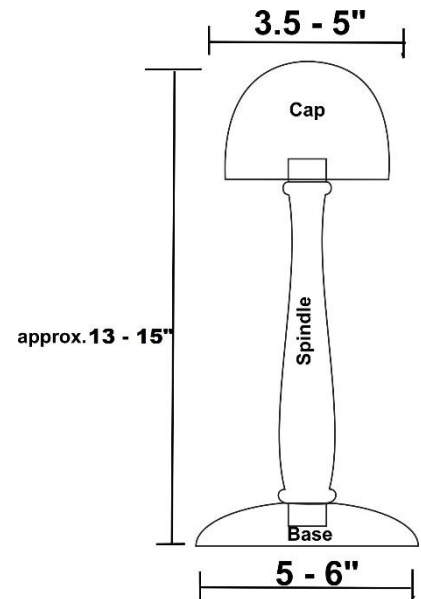


Wig Stand Design

The height should be 13 to a max 15 inches.

The overall design of the wig stand can be as *creative* as possible within the following guidelines:

- Height 13-15" high approximately
- Cap – 3 ½ to 5" Rounded
- Base - 5 to 6" to complement the cap
Should be heavy enough to provide stability
A preference is to be dished out slightly to hold jewellery. This is not a requirement.
- Finish –
 - Since it is possible that these will get wet that varnishes, waxes and oils be avoided.
 - Polymerized tung oil
 - Polyurethane
- Wood -
 - Any type of wood can be used.
 - Segmenting and laminating possible but it would be recommended that a waterproof glue like Titebond 3 used and be completely **sealed with poly.**
 - Softwood woods like pine and cedar can be used but be aware that if you plan on staining there is lots of end grain visible that absorb a lot of stain



There are various ways to create your project depending on the chucks and accessories you have available. See instructions on this site.

Below are the links and some pictures to other clubs that have done this. Note, the GHWG have made their wig stands that are detachable for there may be stored and shipped in a box. This has not been a requirement of the Durham Cancer Support Centre.

This project was originally conceived by South Auckland Woodturners Guild.

Links to there instructions are

<http://www.sawg.org.nz/sawg/wp-content/uploads/2013/02/Wig-Stand.pdf>

<http://www.sawg.org.nz/sawg/wp-content/uploads/2013/02/Spindles-for-Wig-Stands.pdf>

Some cool examples from Woodturners Guild of Ontario (<http://www.wgo.ca/>)



For WGO instructions see page 2 -

http://www.wgo.ca/newsletters/2012_03.pdf

Some cool examples from Golden Horseshoe Woodturners Guild (<http://www.ghwg.ca/>)



For GHWG instructions see -

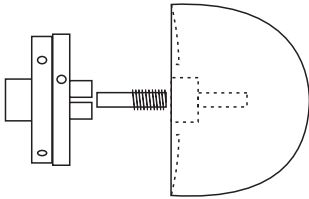
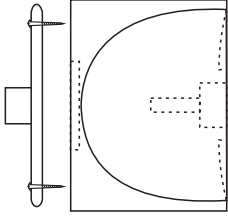
http://www.ghwg.ca/techniques/Wig_Stand_plans.pdf

http://www.ghwg.ca/techniques/Wig_Stand_Instructions.pdf

WIG STAND

Based on a photo in MWG Keen Edge

Wig Stand Head

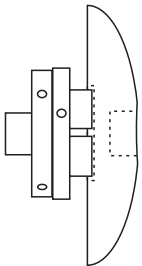
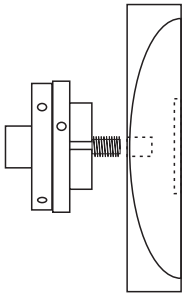


Start with a blank of lightweight wood 150 square by 110mm thick. This can be held as a square in a large chuck, or on a faceplate with wide-spaced screws, or by a chick in a drilled dovetail. Flatten the face that is to be the underside. Make a dovetail to fit a 25mm chuck by 15mm deep. This will also be the dovetail to fit the shaft of the wig stand. Or you may drill an additional hole to remount this on a long screw chuck. Or you may cut a spigot around the 25mm hole. Sand and finish this underside.

Turn the wood around and re-mount it on a 25mm chuck or long screw chuck. Round off the top of the wig stand. The upper half of this top is almost a hemisphere curving into almost straight sides for the lower half. This should now be about 140mm diameter and 100mm high. Sand and finish.

Non-drying oil and wax finishes are not recommended but drying oils, polyurethane or lacquer may be used.

The Base



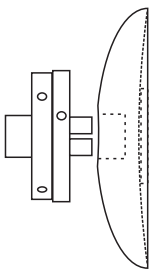
Start with a block of heavy wood about 160mm square and 50mm thick.

Mount this on a screw chuck or use a shallow drilled dovetail. Flatten the bottom (not concave) and make a shallow dovetail to fit a 50mm chuck. Finish this surface now if the chuck dovetail is not being removed as detailed below.

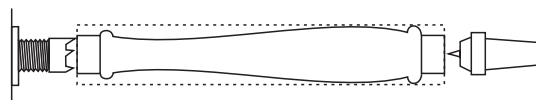
Turn the wood over and remount on a chuck using the dovetail. Round the wood off. Make the very top of the curve into a flat or slight concave where the shaft will fit. Make a dovetail to fit a 25mm chuck by 15mm deep. This will also be the dovetail to fit the shaft of the wig stand.

You may add beads and decoration to this surface. Sand and finish.

You may now declare the base to be "finished" or turn the wood over and remount on a 25mm chuck or jam chuck. Cut the bottom to a slight concave to remove the chuck dovetail. Sand and finish.



The Shaft



Start with a piece at least 240mm long and about 40mm square. Place it between centers. Make a 25mm diameter by 14mm long spigot on each end. Turn the remainder to a shape of your choice.

